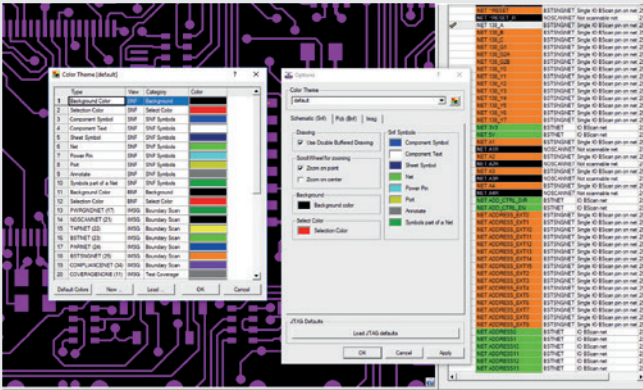


JTAG Visualizer

Interactive schematic and layout viewers



- ✔ Supports PCB layout and schematic views
- ✔ Stand-alone or plug-in to JTAG ProVision
- ✔ View and print color-coded fault coverage data
- ✔ Simplifies fault finding in repair and rework

Introduction

JTAG Visualizer is a design data viewer that also integrates with JTAG Technologies' family of boundary-scan products and selected 3rd party systems. JTAG Visualizer accepts input data (schematic, layout, and information files) from sources such as EDA tools enabling faster DfT analysis and fault finding on boundary-scan and non-boundary-scan target designs.

Applications

JTAG Visualizer enhances the power of boundary-scan throughout board design, manufacturing and repair. Locating specific nets, components and other items in the schematics or layouts is a snap - even for the most complex designs. And, while a designer may wish to check schematics and/or layouts for (boundary-scan) testability, production and repair technicians will benefit from faster graphical location of diagnosed faults on layout.

Highlighting the schematics

During design, an important task is to assure 'testability', a process often referred to as Design-for-Test, or DfT. The life-cycle benefits of boundary-scan are greatly enhanced by a formal approach to DfT prior to committing the design to layout. ProVision users with JTAG Visualizer, can easily view the parts of the schematic defined as testable and which parts need improvement. This is achieved by combining the schematic data with actual test application data.

Alternatively Visualizer's Maps feature offers a basic accessibility review from a simple mouse click. Customizable colors, indicating test coverage levels or access types can be displayed in a color-coded schematic. Once the design has been optimized for boundary-scan test and committed to layout, final application development can begin in the JTAG ProVision development environment.

Manufacturing use

JTAG Visualizer greatly facilitates the repair of defective boards by showing the faults graphically in the layout and in the schematics. From ProVision, Visualizer can be launched automatically using the 'Visualize nets on Fail' feature. Alternatively, the output from JTAG's pin-level diagnostics reporter can be overlaid onto Visualizer with the click of a mouse, allowing a technician to find all instances of the faulty net(s) within the physical layout or schematic circuit.

Advanced Features

Visualizers' flip feature allow an instant turn of the layout view to see how boards might look from the underside. Locate, Zoom to and Find next also help the user to navigate through the design. These features illuminate only selected nets and help to track these as they pass through multiple board layers.

Nets can be highlighted in the currently visible layer (1). In addition, it is possible to highlight an entire net (trace), including net sections located on layers other than the one currently visible (2).

Another option allows you to use dark tones to also display the layers on which the highlighted net is present, but which are disabled for normal viewing (3).

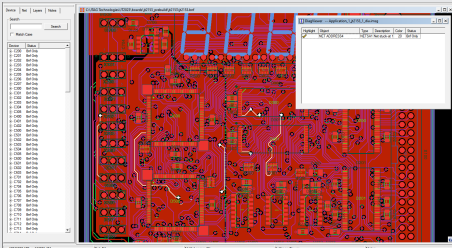


Figure 1: Nets can be highlighted in the currently visible layer

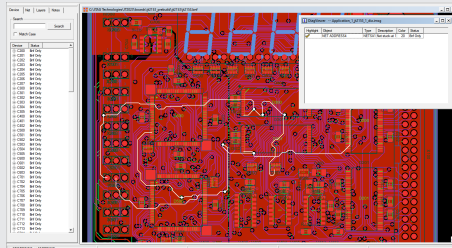


Figure 2: Highlighting an entire net (trace), including net sections located on layers other than the one currently visible

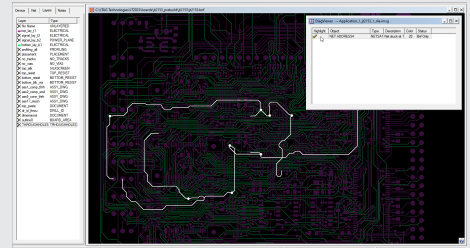


Figure 3: Highlighted - AutoLayer On

Supported Schematic Systems

Altium	Designer
Cadence	OrCAD Capture, Concept
Mentor	CAMCAD, DxDesigner (EE 7.9.3 + and ViewDraw), Design Capture 2002/2004, Design Architect, PadsLogic 2005/2007
Zuken	CR5000, CadStar

Supported Layout Systems

Valor	ODB++, ODBXML
Altium	P-CAD, Designer
Cadence	Allegro
Fabmaster	FATF
Mentor	CAMCAD, PADS PowerPCB, PADS Layout, BoardStation, Expedition PCB
DDE-EDA	Supermax ECAD
Intercept	Pantheon
Zuken	CR5000, Cadif

Ordering information

JTVB	JTAG Visualizer for Board Layout - includes one CAD extractor/converter
JTVS	JTAG Visualizer for Schematics - includes one CAD extractor/converter

Prerequisites Software

- ProVision V2.0 or PSA or PIP/***
- BSD Diagnostics recommended with layout viewer

Global Representation

Want to know more about our solutions and products?
Please contact us at our head office or visit our contact page.

JTAG Technologies (Headquarters)

Boschdijk 50, 5612 AN Eindhoven, The Netherlands
+31 (0)40 295 0870
info@jtag.com
www.jtag.com

Use the QR code for an overview of our global offices and local representatives:
www.jtag.com/contact-us



We *are* boundary-scan.®