

JTAG TECHNOLOGIES SYMPHONY INTEGRATION SOLUTION FOR DIGITALTEST MTS SERIES

Boundary-scan solution for ICT and flying probe



Digitaltest MTS Symphony Highlights

- Integration solution for Digitaltest and JTAG Technologies
- Supports all ICT and flying probe test (FPT) systems made by Digitaltest
- Fast integration of the boundary-scan hardware right in the MTS Systems rack (vacuum & cable interface)
- Simple test program creation and debugging using JTAG ProVision™ full access to the hybrid ICT/FPT channels
- Optimized transfer of CLINK DTM™ data to ProVision™
- Familiar integration of boundary-scan using the CITE32™ user interface including error application diagnostics in case of error
- An increase in test coverage while reducing adapter costs

The result of modern designs

Increasing functionality while miniaturizing the components dictates the use of cutting edge component technologies such as Ball-Grid Arrays (BGAs) or Chip-Scale Packages (CSP). The number of physical access points is thus greatly reduced. This in turn results in lacking test coverage for established testing procedures.

The Solution approach

The integration solution by JTAG Technologies makes it possible for users to continue to get the most out of their ICT/FPT systems. It provides increased error coverage and improved diagnostics, while reducing costs for highly complex designs.

The Symphony package was created together with Digitaltest's development team and is unique in its architecture, because it combines the advantages of both testing methods.

Even in the test program development phase using our JTAG ProVision™ software, you have full access to the Digitaltest system's hybrid pins to be included in the test. In the flying probe system, the heads are automatically positioned.

This results in increased test coverage and a drastic reduction of the debugging time in the ICT/FPT. The required data as to which hybrid pin is connected to

We are boundary-scan.®

Image 1 shows the ICT system MTS300 (left) and the flying probe system MTS500 (right) made by Digitaltest. The JTAG controller in MTS format is shown below this.

Supported Systems:

ICT: MTS30, MTS180, MTS300, MTS888

FPT: MTS50x

The Symphony MTS package at a glance

Hardware

- JTAG Controller (depending on the requirements)

Software

- JTAG Technologies software for performing boundary-scan tests and in-system programming including actuation of the hybrid channels as well as the flying probe test (FPT) heads of the Digitaltest system.
 - Boundary-scan diagnostics for error analysis at pin level and transfer to the ICT/FPT system
 - Inclusion of the JTAG error/status notifications using CITE 32™
 - permanent node locked license including Sentinel USB key
- Please request the Digitaltest system requirements with indication of the serial number.

which nets or which flying probe head can be used for contact is acquired directly from CLINK DTM™. ProVision™ thus has all the information needed to automatically generate the respective test using the hybrid pins. Infrastructure, interconnect, logic, cluster and memory connection tests can be created easily.

JTAG TECHNOLOGIES SYMPHONY INTEGRATION SOLUTION FOR DIGITALTEST MTS SERIES

Boundary-scan solution for ICT and flying probe

This enables fast and simple implementation even for mixed signal architectures, in which the resources of both systems are required.

After debugging, the created testing and programming routines are integrated in the CITE32™ software, so that the boundary-scan diagnostics is fully implemented in the Digitaltest report.

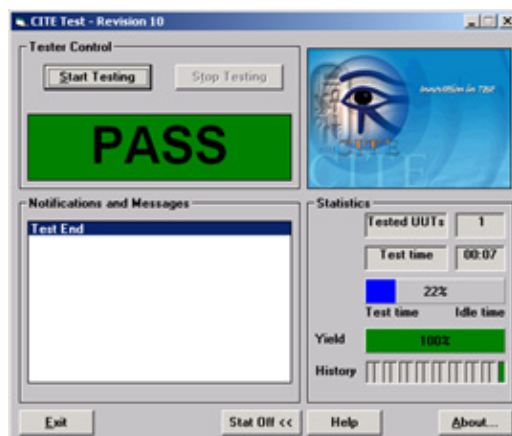
Thus operators can work exclusively in their familiar environment.

The boundary-scan controller from the JT37x7 series was developed especially for use in MTS systems and is inserted directly in the system rack. The boundary-

scan controller can be provided as a vacuum or cable interface depending on the system and thus provides optimized signal routing through to the interface. Optimum results can also be achieved in complex adaptations using coax implementation in the adapter.

The controller not only enables high volumes of the created boundary-scan applications, but also allows for in-system programming of flash and CPLD components. Furthermore, the solution supports our Core-Commander module for microcontrollers and FPGAs for embedded testing and programming solutions.

CITE32™



Region or Country	Telephone	E-mail
• Europe or Rest of World	+31 (0)40 295 0870	info@jtag.nl
• United Kingdom & Ireland	+44 (0)1234 831212	sales@jtag.co.uk
• North America	Toll free - 877 FOR JTAG Western US - 949 454 9040	info@jtag.com
• China, Malaysia, Singapore, Thailand, Taiwan	+86 (021) 5831 1577	info@jtag.com.cn
• Germany	+49 (0)971 6991064	germany@jtag.com
• Finland	+358 (0)9 4730 2670	finland@jtag.com
• Sweden	+46 (0)8 754 6200	sweden@jtag.com

3101-Symphony Digitaltest-E-1000

© The JTAG Technologies logo and other trademarks designed with the symbol "®" are trademarks of JTAG Technologies registered in Europe and/or other countries. JTAG Technologies reserves the right to change design and specifications without notice.

JTAG
TECHNOLOGIES®