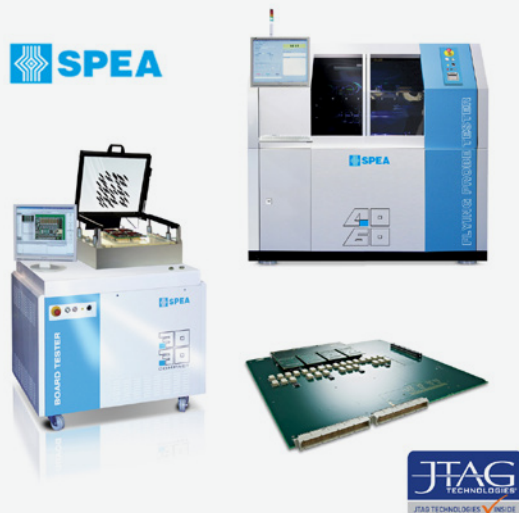


# JTAG TECHNOLOGIES SYMPHONY INTEGRATION SOLUTION FOR SPEA 3030/40X0 SERIES

## Boundary-scan solution for ICT und Flying Probe



### SPEA 3030/40x0 Symphony Highlights

- Integration solution for SPEA and JTAG Technologies
- Supports all ICT and Flying Probe Testsystems (FPT) from SPEA
- Fast integration of the boundary-scan hardware right in the SPEA systems rack
- Simple test program creation and debugging using JTAG ProVision™, via full access to the SPEA ICT/FPT channels
- Optimized transfer of Leonardo™ data to ProVision
- Familiar integration of boundary-scan tests using Leonardo™ user interface including error analysis in case of error
- an increase in test coverage while reducing adapter costs

### The impact of modern designs

Increasing functionality while miniaturizing the components on PCBAs dictates the use of cutting edge component technologies such as Ball-Grid Arrays (BGAs) or Chip-Scale-Packages (CSP). The number of physical access points is thus greatly reduced which in turn results in reduced test coverage for established testing procedures such as In-Circuit Test (ICT) and Flying-Probe Test (FPT).

### Adding JTAG/Boundary-scan

The integration solutions offered by JTAG Technologies make it possible for users to get the most out of their existing ICT/FPT systems while adding a new test dimension- JTAG/boundary-scan. This method provides increased error coverage and improved diagnostics, while reducing costs for highly complex designs. The Symphony package was created together with the SPEA development team and offers a unique architecture - combining the advantages of both boundary-scan and FPT. The merger of test strategies results in increased test coverage and offers a drastic reduction of the debugging time in the FPT. What's more the data needed to position the flying probe head can be acquired by JTAG ProVision directly from Leonardo™ software.

ProVision therefore has the full information required to automatically generate tests incorporating the roving

Photo 1, shows the ICT System 3030 Compact (left) and the Flying Probe Testsystem 4060 (right) from SPEA. Below the JTAG Controller for SPEA.

#### Supported Systems:

ICT: 3030 Compact, 3030 Multimode

FPT: 4020, 4030, 4040, 4060, 4020S2, 4060S2, 4050S2

#### Overview Symphony SPEA Package:

##### Hardware

- JTAG Controller (depending on requirements)

##### Software

- JTAG Technologies Software for performing boundary-scan tests and in-system-programming incl. actuation of the SPEA channels as well as the Flying Probe heads (FPT) of the SPEA System.
- Boundary-scan-Diagnostics for error analysis at pin level and transfer to the ICT/FPT system
- Inclusion of the JTAG error/status notifications using Leonardo™
- Permanent node locked license including Sentinel USB Key

Please request the SPEA system requirements with indication of the serial number.

probe pins e.g. infrastructure, interconnect, logic-cluster and memory-cluster connection tests. This allows fast and simple implementation of boundary-scan even for mixed signal architectures, when the resources of

We *are* boundary-scan.®

[www.jtag.com](http://www.jtag.com)

# JTAG TECHNOLOGIES SYMPHONY INTEGRATION SOLUTION FOR SPEA 3030/40X0 SERIES

Boundary-scan solution for ICT und Flying Probe

both systems are required.

Following debug on JTAG ProVision the developed tests and programming routines are integrated into Leonardo software. This also allows full boundary-scan test diagnostic information to be included in the Spea report.

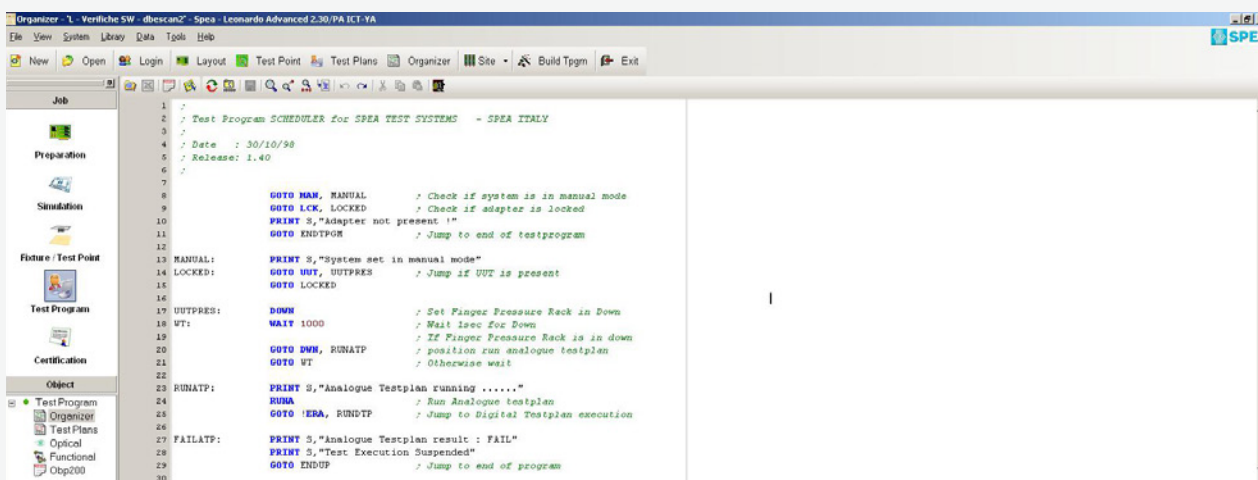
The JT37x7 boundary-scan controller hardware plus JT 2147 interface pod have been specially adapted for use in 3030/40x0 systems and is inserted directly in the system rack. Using passive coaxial cabling

for the JTAG signals guarantees optimal signal transmission.

The high-performance controller not only enables rapid execution of boundary-scan test applications, but also supports in-system programming of flash and CPLD components.

Furthermore, the solution supports the JTAG Technologies CoreCommander options that leverage core logic of microprocessors and FPGAs to provide even more advanced testing and programming solutions.

## Leonardo™



Region or Country	Telephone	E-mail
• Europe or Rest of World	+31 (0)40 295 0870	info@jtag.nl
• United Kingdom & Ireland	+44 (0)1234 831212	sales@jtag.co.uk
• North America	Toll free - 877 FOR JTAG Western US - 949 454 9040	info@jtag.com
• China, Malaysia, Singapore, Thailand, Taiwan	+86 (021) 5831 1577	info@jtag.com.cn
• Germany	+49 (0)971 6991064	germany@jtag.com
• Finland	+358 (0)9 4730 2670	finland@jtag.com
• Sweden	+46 (0)8 754 6200	sweden@jtag.com

Q1\_2016\_E\_1000  
© 2016 The JTAG Technologies logo and other trademarks designed with the symbol "®" are trademarks of JTAG Technologies registered in Europe and/or other countries. JTAG Technologies reserves the right to change design and specifications without notice.