

# JTAG TECHNOLOGIES SYMPHONY INTEGRATION SOLUTION SEICA PILOT 4D LINE

## Boundary-scan solution for Flying Probe



### Seica Pilot Symphony Highlights

- Integration solution for Seica and JTAG Technologies
- Supports all Flying Probe Systems (Pilot 4D series) from Seica
- Fast integration of the boundary-scan hardware direct in the Flying Prober
- Simple test program creation and debugging using JTAG ProVision™
- Optimized transfer of VIVA™ data in ProVision™
- Familiar integration of boundary-scan applications using VIVA™ user interface including diagnostics in case of error
- an increase in test coverage while reducing adaptor costs

### The result of modern designs

Increasing functionality while miniaturizing the components dictates the use of cutting edge component technologies such as Ball-Grid Arrays (BGAs) or Chip-Scale Packages (CSP). The number of physical access points is thus greatly reduced. This in turn results in lacking test coverage for established testing procedures.

### The solution approach

The integration solution by JTAG Technologies makes it possible for users to continue to get the most out of their FPT systems. It provides increased error coverage and improved diagnostics, while reducing costs for highly complex designs.

The Symphony package was created together with Seica's development team and is unique in its architecture, because it combines the advantages of both testing methods.

Even in the test program development phase using our JTAG ProVision™ software, you have full access to the Seica Flying Probe system heads as they are automatically positioned.

This results in increased test coverage and a drastic reduction of the debugging time in the FPT. The required data as which location on the board can be probed and which flying probe head can be used

Image 1, shows the flying probesystem Pilot 4D V8 from Seica. Next to it the JTAG Controller including QuadPod in special Seica Format.

#### Supported Systems:

FPT: Pilot 4D H4, Pilot 4D L4, Pilot 4D M4, Pilot 4D V8

#### The Symphony Seica Package at a glance:

##### Hardware

- JTAG Controller (depending on the requirements)

##### Software

- JTAG Technologies Software for performing boundary-scan tests and in-system-programming including actuation of the flying probe test heads (FPT) of the Seica system.
- Boundary-scan-diagnostics for error analysis at pin level and transfer to the ICT System
- Inclusion of the JTAG error/status notifications using VIVA™
- permanent node locked license including Sentinel USB Key

Please request the Seica system requirements with indication of the serial number.

for contact is acquired directly from Seica Software VIVA™.

ProVision™ thus has all the information needed to automatically generate the respective test using the Flying Probes. Infrastructure, interconnect, logic, clus-

## JTAG TECHNOLOGIES SYMPHONY INTEGRATION SOLUTION SEICA PILOT 4D LINE

Boundary-scan solution for Flying Probe

ter and memory connection tests can be created easily. This enables fast and simple implementation even for mixed signal architectures, in which the resources of both systems are required.

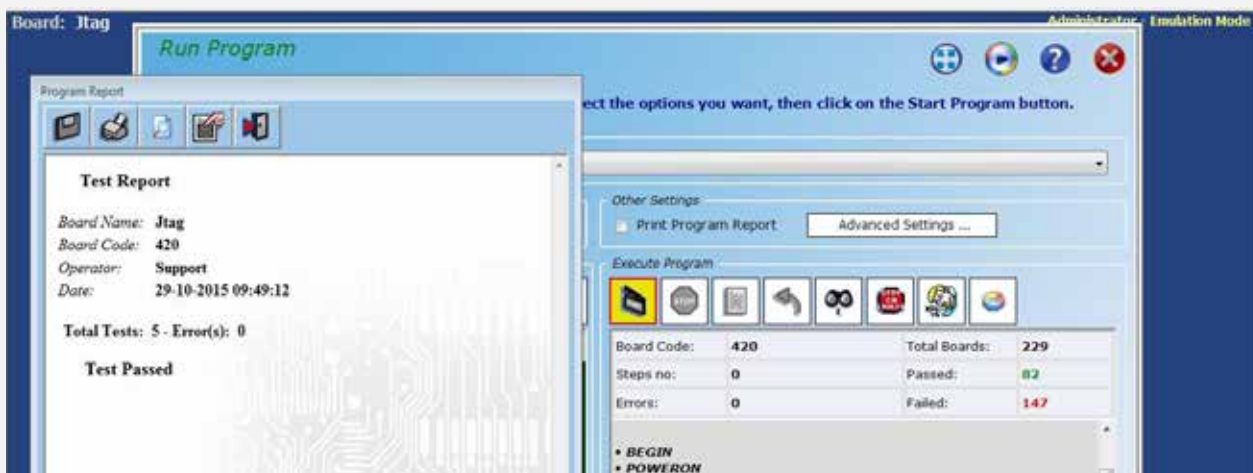
After debugging, the created testing and programming routines are integrated in the VIVA™ software, so that the boundary-scan diagnostics is fully implemented in the Seica report.

Thus operators can work exclusively in their familiar environment.

In cooperation with Seica a clean hardware integration has been developed. It includes isolation relays ensuring that when not in use the boundary-scan hardware does not interfere with the Flying Probe tests.

The controller not only enables high volumes of the created boundary-scan applications, but also allows for in-system programming of flash and CPLD components. Furthermore, the solution supports the JTAG CoreCommander module for microcontrollers and FPGAs for embedded testing and programming solutions.

Viva™



Region or Country	Telephone	E-mail
• Europe or Rest of World	+31 (0)40 295 0870	info@jtag.nl
• United Kingdom & Ireland	+44 (0)1234 831212	sales@jtag.co.uk
• North America	Toll free - 877 FOR JTAG Western US - 949 454 9040	info@jtag.com
• China, Malaysia, Singapore, Thailand, Taiwan	+86 (021) 5831 1577	info@jtag.com.cn
• Germany	+49 (0)971 6991064	germany@jtag.com
• Finland	+358 (0)9 4730 2670	finland@jtag.com
• Sweden	+46 (0)8 754 6200	sweden@jtag.com

0063-Q1\_2016\_E\_1000

© 2015 The JTAG Technologies logo and other trademarks designed with the symbol "®" are trademarks of JTAG Technologies registered in Europe and/or other countries. JTAG Technologies reserves the right to change design and specifications without notice.